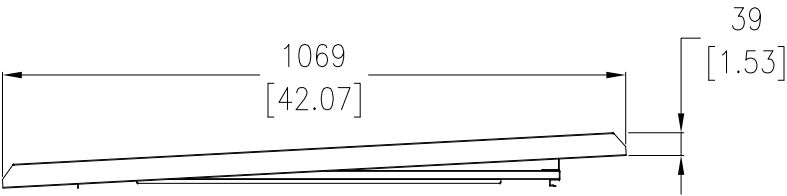


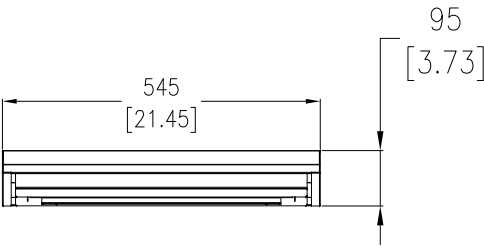
BOTTOM VIEW



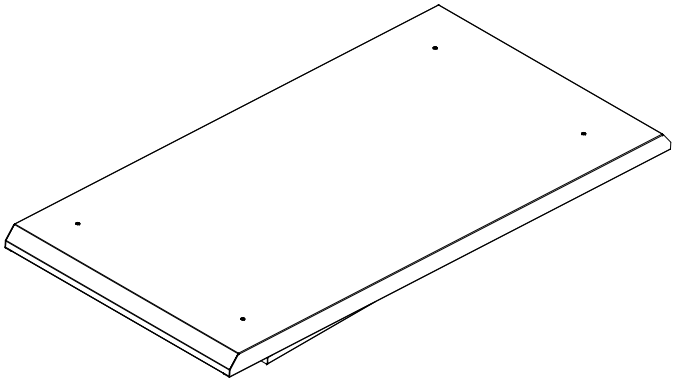
FRONT VIEW



TOP VIEW



LEFT SIDE VIEW
(FRONT WHEN MOUNTED ON UPS)



ISOMETRIC VIEW

- NOTES:
- 1.INSTALLATION SHALL COMPLY WITH ALL APPLICABLE NATIONAL AND LOCAL ELECTRICAL REGULATIONS.
 - 2.REFER TO PRODUCT DOCUMENTATION FOR ADDITIONAL DETAILS PRIOR TO INSTALLATION AND SITE PREPARATION WORK.
 - 3.ALL DIMENSIONS ARE IN MILLIMETERS [INCHES] UNLESS OTHERWISE SPECIFIED.
 - 6.WEIGHT OF IP X2 KIT: 11.94kg [26.3 lb].
 - 7.COLOR: RAL 9003.

THIS DRAWING AND SPECIFICATIONS HEREIN ARE THE PROPERTY OF SCHNEIDER ELECTRIC AND SHALL NOT BE COPIED, REPRODUCED OR USED IN WHOLE OR IN PART, AS THE BASIS FOR THE MANUFACTURE OR SALE OF ITEMS WITHOUT WRITTEN PERMISSION FROM SCHNEIDER ELECTRIC. THIS DRAWING IS BASED UPON LATEST AVAILABLE INFORMATION AND IS SUBJECT TO CHANGE WITHOUT NOTICE.

Schneider
Electric

TITLE:
Easy UPS 3M IPX2 Kit For
120 to 160kVA, 208V/400V UPS
for external batteries
Canopy-General Arrangement

DWG NO: E3MOPT015

REV. 0

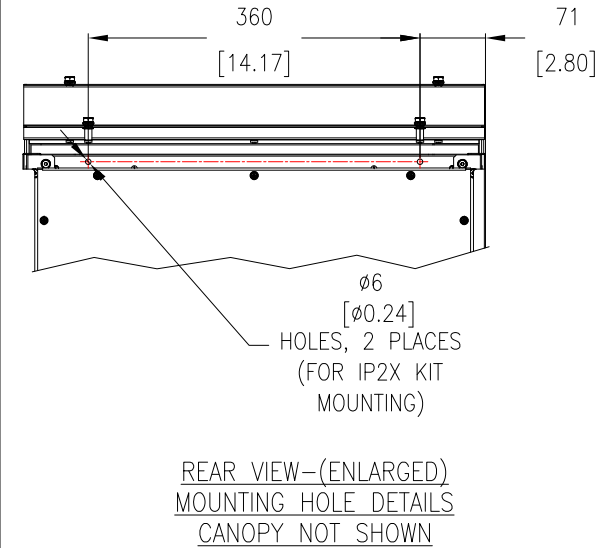
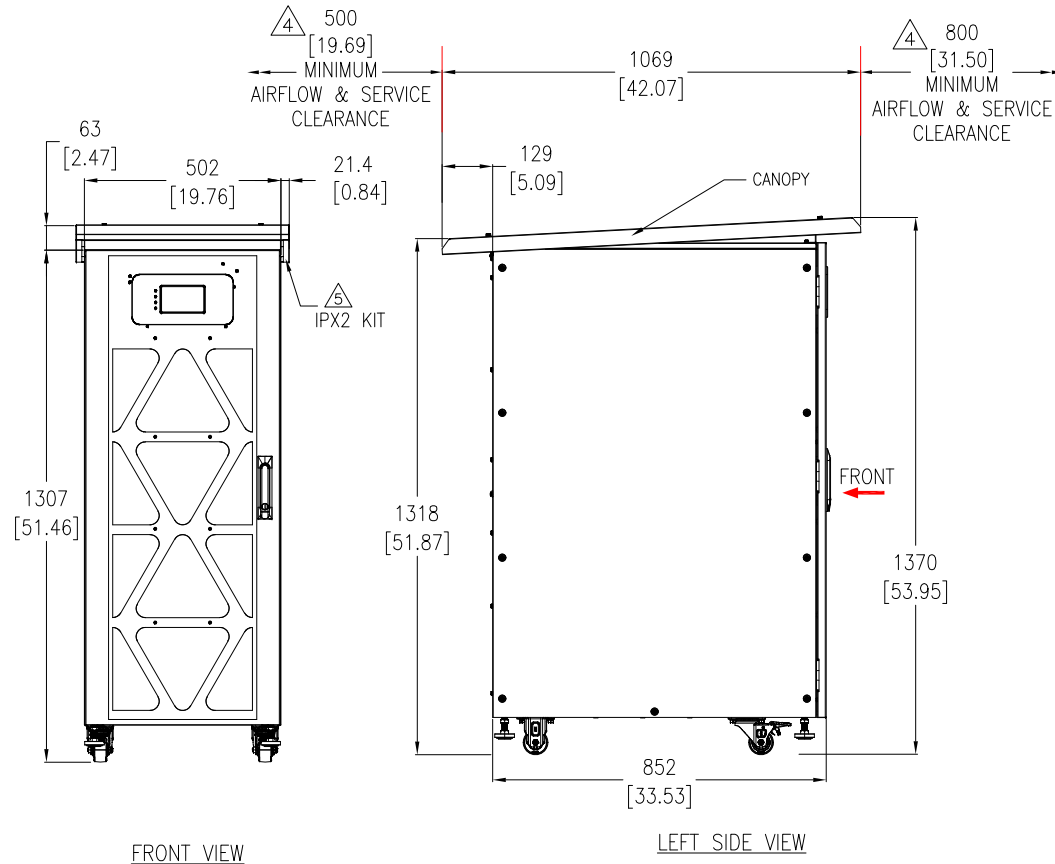
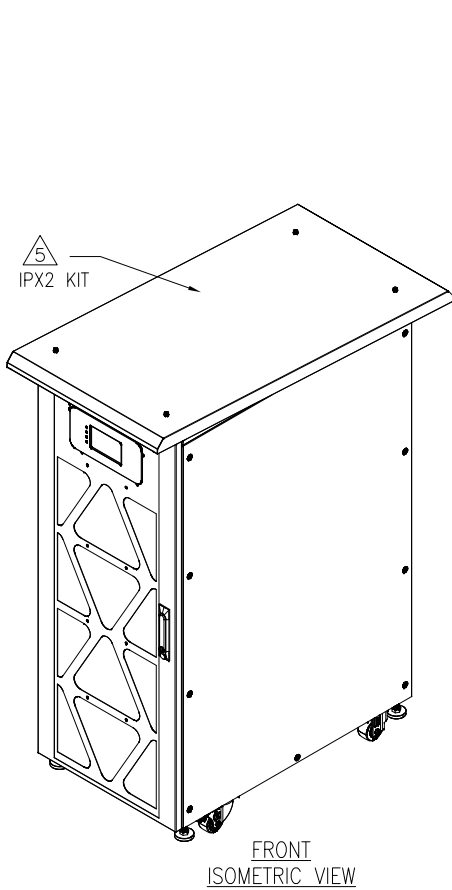
DRAWN: ASHISH 29-NOV-23

ENGINEER: Bosheng Zhang 19-DEC-23

APPROVED: Sory Wang 19-DEC-23

PROJECT: SUBMITTAL DRAWINGS SHEET 1 OF 2

FIRST
ANGLE
PROJECTION



NOTES:

- 1.INSTALLATION SHALL COMPLY WITH ALL APPLICABLE NATIONAL AND LOCAL ELECTRICAL REGULATIONS.
- 2.REFER TO PRODUCT DOCUMENTATION FOR ADDITIONAL DETAILS PRIOR TO INSTALLATION AND SITE PREPARATION WORK.
- 3.ALL DIMENSIONS ARE IN MILLIMETERS [INCHES] UNLESS OTHERWISE SPECIFIED.
- 4.FRONT AND REAR CLEARANCE ARE FOR AIRFLOW AND SERVICE ACCESS. CONSULT WITH THE LOCAL SAFETY CODES AND STANDARDS FOR ANY ADDITIONAL REQUIREMENTS OF LOCAL AREA.
- 5.FOLLOW THE INSTRUCTIONS IN USER MANUAL FOR INSTALLATION OF IPX2 KIT.
- 6.PROTECTION CLASS: IPX2.

THIS DRAWING AND SPECIFICATIONS HEREIN ARE THE PROPERTY OF SCHNEIDER ELECTRIC AND SHALL NOT BE COPIED, REPRODUCED OR USED IN WHOLE OR IN PART, AS THE BASIS FOR THE MANUFACTURE OR SALE OF ITEMS WITHOUT WRITTEN PERMISSION FROM SCHNEIDER ELECTRIC. THIS DRAWING IS BASED UPON LATEST AVAILABLE INFORMATION AND IS SUBJECT TO CHANGE WITHOUT NOTICE.

Schneider Electric

TITLE:
Easy UPS 3M IPX2 Kit For
120 to 160kVA, 208V/400V UPS
for external batteries
Typical Arrangement

DWG NO: E3MOPT015

REV. 0

DRAWN: ASHISH 29-NOV-23

ENGINEER: Bosheng Zhang 19-DEC-23

APPROVED: Sory Wang 19-DEC-23

FIRST
ANGLE
PROJECTION

PROJECT: SUBMITTAL DRAWINGS SHEET 2 OF 2